

# NightShift Offers Superior Teleradiology Solutions by Radiologists, for Radiologists

*Radiologist owned and operated, NightShift has been providing on-call teleradiology solutions to radiology groups nationwide since 2001, and has the experience of nearly one million cases read for our clients. Our comprehensive service offering and absolute commitment to client satisfaction through quality monitoring, set us apart from the crowd. Partner with NightShift Radiology and extend the superior level of service and care that you provide during the day, into the night.*

- **NightShift is focused on helping you and your business thrive by offering both preliminary reads and final interpretations.** Upon receiving images, we provide preliminary reads in an average of 20 minutes or less. For those facilities seeking to grow their practice and further increase workplace efficiency, NightShift is skilled at delivering attentive, personal service in time-critical situations. Our advanced network capabilities enable rapid image transfer times, ensuring a smooth workflow between your facility and our radiologists.
- **NightShift is a fully accredited JCAHO organization.** The Joint Commission has awarded us their *Gold Seal of Approval* after a thorough review covering our operating policies and procedures, radiologist credentials and Quality Assurance/Quality Improvements program.
- **All NightShift radiologists are U.S.-based and 100% board-certified.** Each of our radiologists works full time with our group—we never hire contractors or locums. In addition, the majority of our radiologists have completed fellowship or advanced training for body or neurological interpretations.
- **Each NightShift client hospital receives a dedicated, toll-free phone and fax line routed directly to the radiologist covering their facility.** Avoid the hassle and delay of a switchboard or middleman. With a single call, ordering physicians or a radiology department can consult with the NightShift radiologist covering their facility to discuss case details.
- **NightShift continually monitors performance via a comprehensive Quality Assurance/Quality Improvement program.** NightShift clients receive quarterly QA/QI reports on our radiologists, in turn, benefiting their practice. With nearly one million cases read for our clients, our quality is excellent with a discrepancy rate of a fraction of one percent.

Discover how teleradiology can benefit your facility. Contact NightShift today to schedule your free price consultation with no contractual obligations, toll-free at (888) 318.8900.



**NIGHTSHIFT RADIOLOGY**

# The NightShift Network: Security and Reliability

*On-call teleradiology is only as dependable as the network that drives it. That's why NightShift Radiology keeps you connected with state-of-the-art equipment, 24/7 monitoring and turn-key service.*

## Expert Installation, Reliable Technology

Upon contracting with NightShift, we will install any equipment necessary for image transmission from your facility to our state-of-the-art network —at no cost to you. Though some competitors use temperamental DSL or cable lines, we use only AT&T T1 data lines to ensure quick and reliable image transmission. In addition, T1 data lines deliver 99.8-percent uptimes, meaning our network is available when you need it.

## From Your Facilities to Our Radiologists

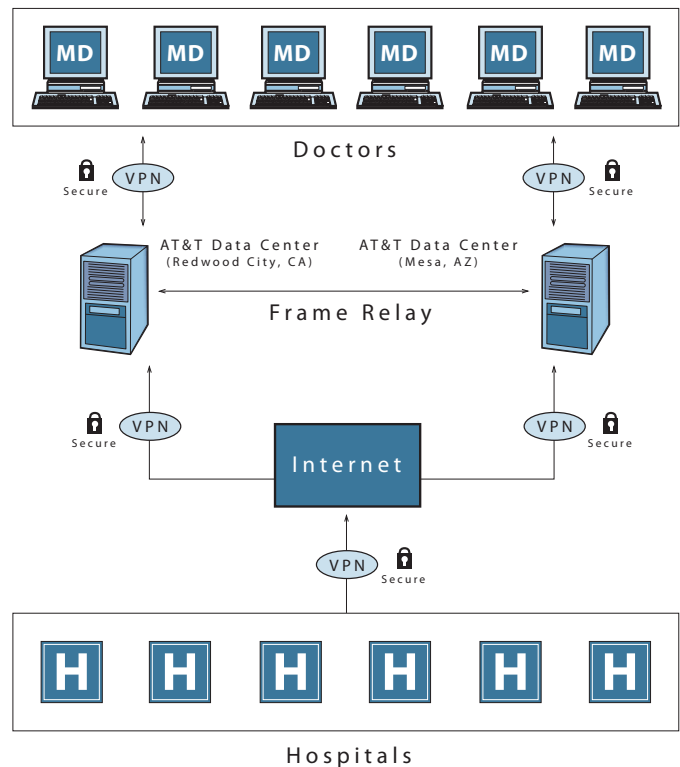
As illustrated by the network diagram, your images pass through our high-level security AT&T data centers over a secure Virtual Private Network (VPN). NightShift's VPN provides an enhanced level of security and reliability during image transfers from your facility to our radiologists.

All images transmit via triple DES HIPAA-compliant encryption connections to our two data centers, and then to our network of U.S.-based radiologists. This VPN/AT&T data center combination ensures both data security and network flexibility. Our network also allows for internal consultation: for complicated or questionable cases, images can be shared among NightShift radiologists.

## Active Monitoring 24/7

Positive redundancy, 24/7, through internal and external monitoring means we are able to provide you with the highest level of reliability and security. Though we have never experienced down time in our primary data center in the three years since its inception, a second back up data center was established to provide added redundancy.

Additionally, NightShift maintains network control by providing complete support to your facility. Should you need network assistance or simply have an inquiry, NightShift's internal IT staff is available to answer your questions at any hour of the day, any day of the week. Enjoy the confidence and peace-of-mind that come with knowing your facilities can connect with our services when you need them most.



**NIGHTSHIFT RADIOLOGY**

# Frequently Asked Questions

**Q: Are NightShift radiologists based in the United States, Board-Certified and Board-Eligible?**

**A:** Yes. NightShift hires only experienced radiologists who are U.S. board-certified and reside within the United States. The majority of our radiologists have completed fellowship or advanced training for body or neurological interpretations. Additionally, each of our radiologists works full time with our group— we never hire contractors or locums.

**Q: Can our ordering physicians speak with your radiologists?**

**A:** Yes, NightShift offers unparalleled access to, and communication with, our radiologists. Medical staff, ER and department personnel can consult directly with our radiologists. We provide each facility a dedicated phone line, which routes incoming calls to the radiologist who interpreted the study, saving time and satisfying your referring physicians.

**Q: Who will obtain medical staff privileges for NightShift radiologists at our hospitals?**

**A:** NightShift assumes total responsibility, as well as all costs associated, for obtaining privileges for our radiologists at your facility. As a JCAHO accredited organization, hospitals may choose to accept our core credentialing, greatly reducing work for the Medical Staff Office and decreasing the time necessary to obtain privileges. For those facilities which do not support the JCAHO accreditation, our credentialing department is experienced in working with the Medical Staff Office to complete the process as quickly as possible.

**Q: Are NightShift radiologists covered by a reputable professional liability carrier? What are your coverage amounts?**

**A:** NightShift maintains limits of \$1 million/\$3million coverage for our radiologists through a top-tier insurance provider. Additionally, these coverage limits are viewed positively when applying for privileges at your facilities.

**Q: Our hospital lacks technical expertise. What technology is necessary to partner with NightShift?**

**A:** Your facility will need Digital Imaging and Communications in Medicine (DICOM)-Store images—NightShift's experienced implementation staff will handle the rest. We install all necessary image transmission equipment and T1 connections and monitor our network, all at our own expense, providing your facility with turn-key service.

**Q: How does NightShift ensure security? Will our images be secure once they leave our hospital?**

**A:** Security and confidentiality are guaranteed through NightShift's Virtual Private Network (VPN). And NightShift never uses direct Internet connections to our radiologists—a potential reliability risk. Please see our detailed handout entitled "The NightShift Network: Security and Reliability" for further information.

**Q: What is the normal timeframe for implementing NightShift Radiology's service?**

**A:** Though the time frame varies from as little as a week to several months, depending upon circumstances, our immediate access to all necessary equipment and key vendor relationships allow us to begin the implementation process promptly.

**Q: Does NightShift require a lengthy contract term?**

**A:** Unlike our competitors, we offer contract terms as short as one year versus their lengthy two and three year agreements.



**NIGHTSHIFT RADIOLOGY**